

Mississauga **Quilts!**

Northcott Challenge
2020

Mississauga Quilters Guild

Theme - “GRAND ENTRANCE”

Rules:

- Size of the finished quilt must not exceed 160” around the perimeter.
- The quilt may be any shape (i.e., square, rectangle, oval, triangle or round)
- All three challenge fabrics provided must be clearly visible and recognizable.
- Construction must consist of three layers: top, batting, and back. Item must be quilted.
- All techniques are acceptable: Hand, machine, embellished, paper pieced, etc.

The Challenge Fabrics



Moon Rise

by Kim Baumgart

Origin of Design

I searched Pinterest for interpretations of the moon and the ocean. Once I had my design, I used applique techniques from Kathy K. Wylie's November 2019 workshop

Artist Statement

The beautiful blue Northcott fabric inspired the ocean waves. The white fabric was perfect for the moon as its gravity pulls the ocean and us towards it. The black fabric provided the night sky, reminiscent of a Caribbean Cruise. The Moon's GRAND ENTRANCE as it rises on the horizon.



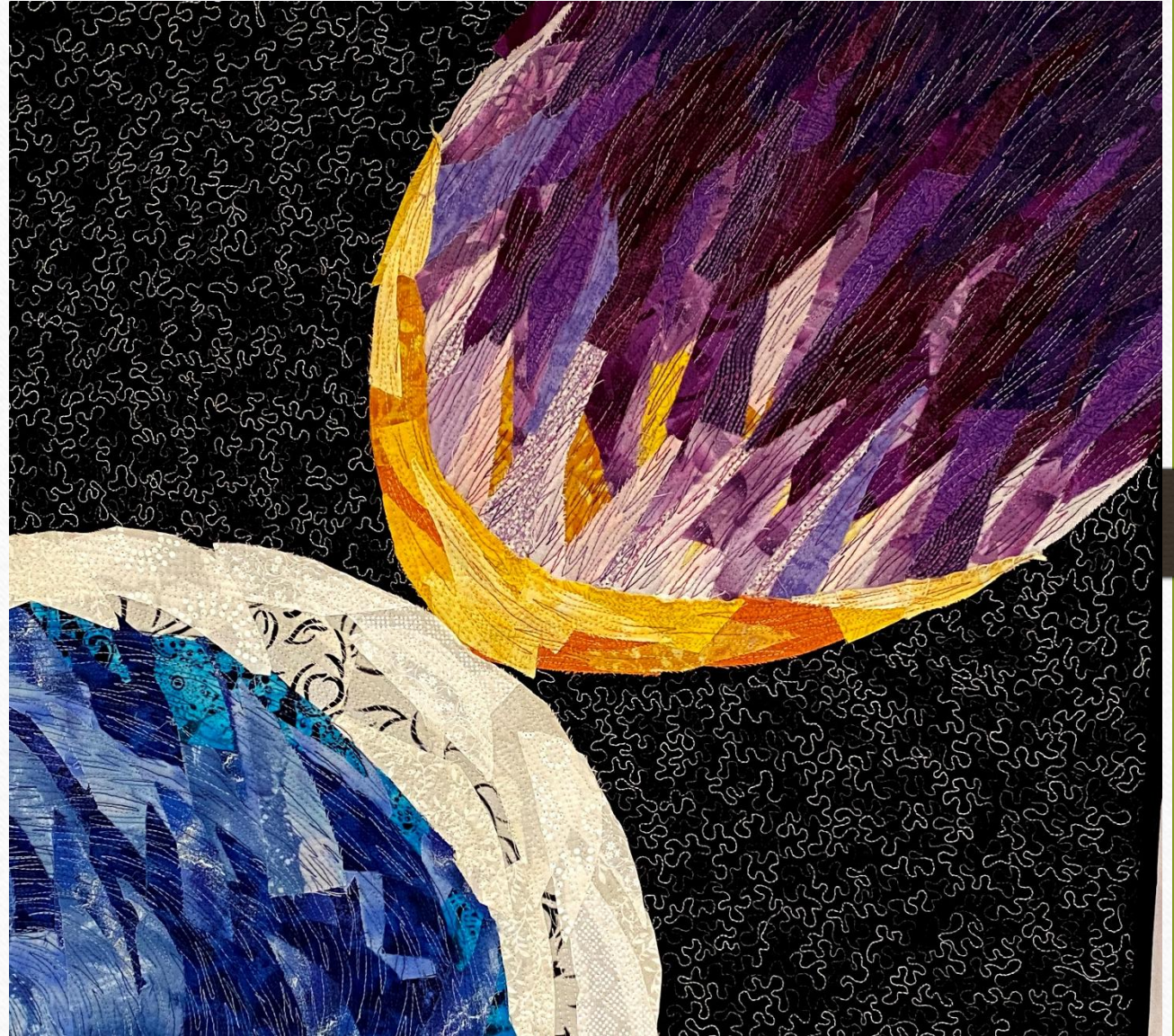


Brace Yourselves

by Teresa Mackie

Artist Statement

This piece is based on a news story about all the near misses our planet has with objects in space





Peacock's Grand Entrance by Patrick Chan

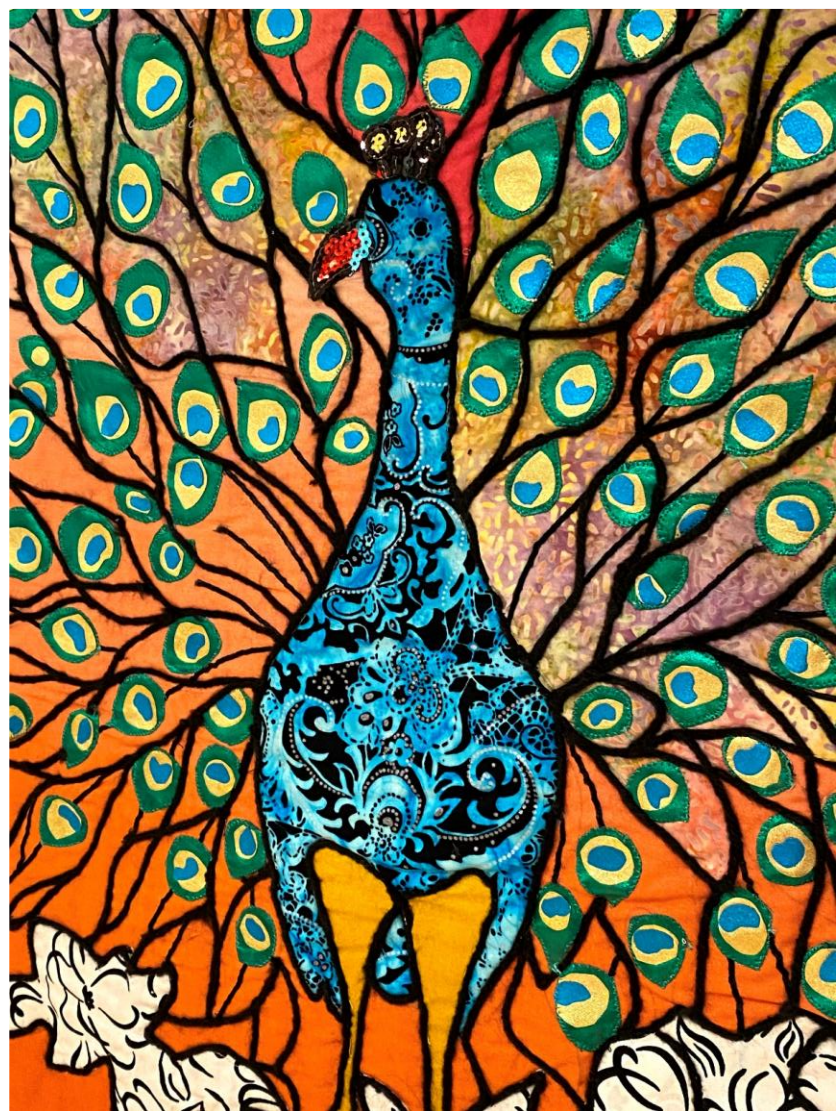
Origin of Design

Inspired by Peacock Window, New England circa 1910 from the book "Color Your Own Tiffany Windows", Rendered by Marty Noble

Artist Statement

Stained glass quilting, Machine applique, long arm machine quilted by myself





Much Ado About Nothing

by Janice Telfer

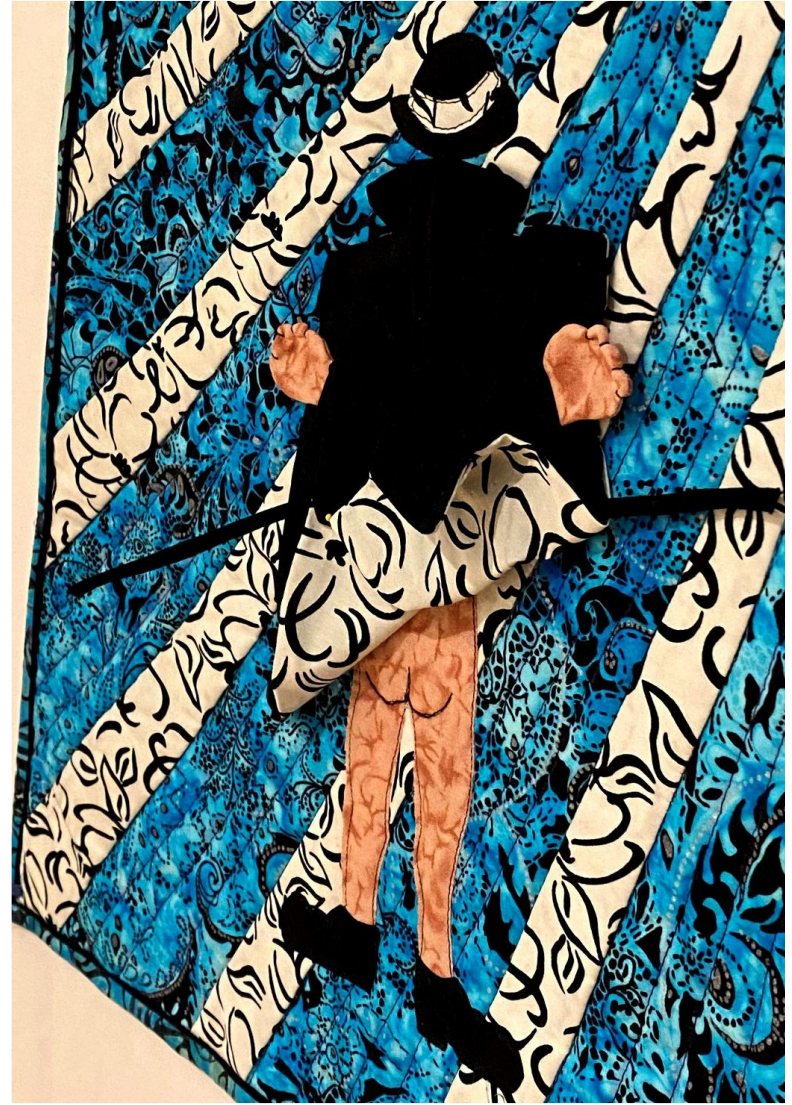
Origin of Design

The idea for this quilt came immediately upon hearing the theme announced. I was told to let my imagination run wild - - and I did!

Artist Statement

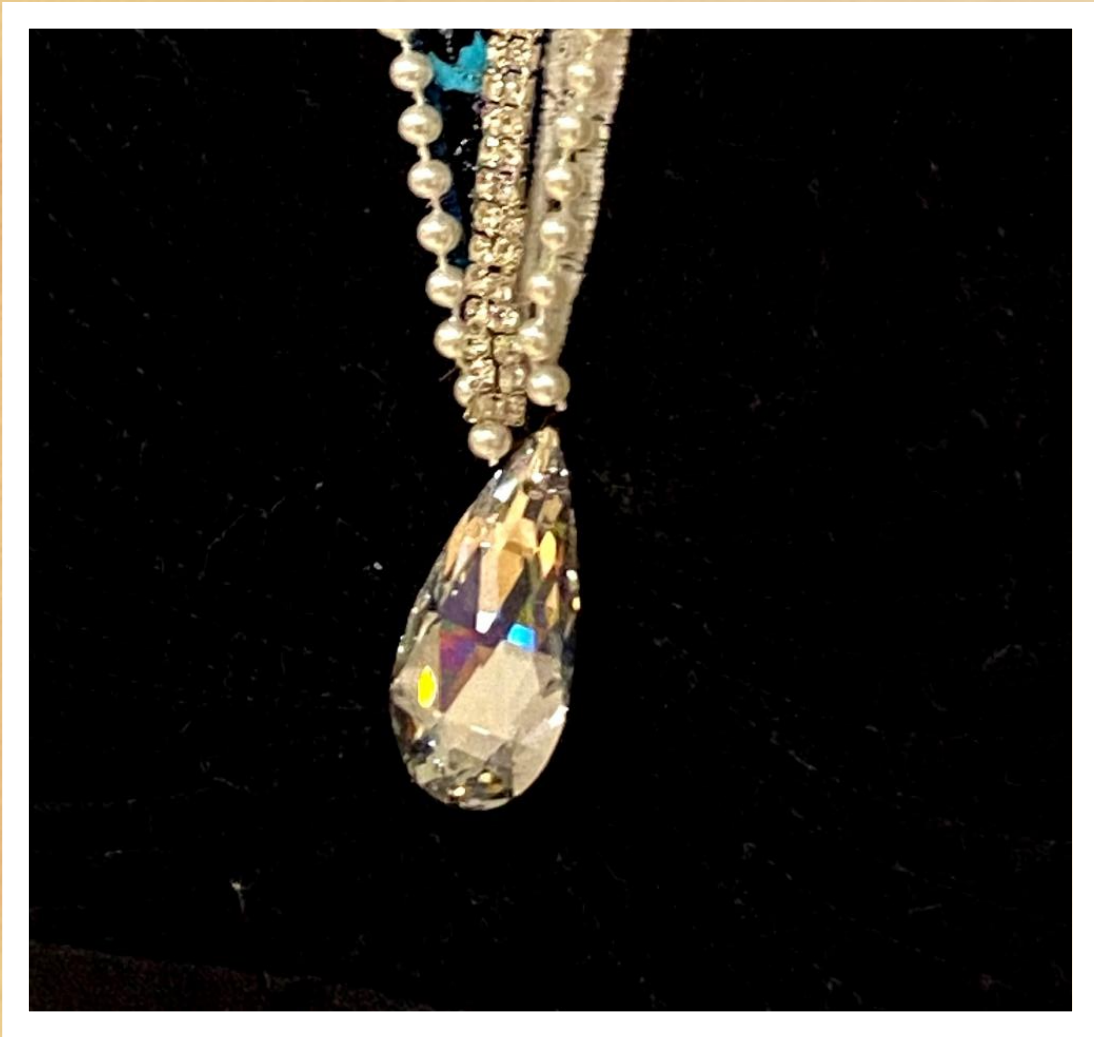
I had fun making the raincoat and using different techniques to get a more 3-D effect. The man was meant to be chubbier, but that was the width of the scrap I was using, so he went on a diet!





Grand Entrance
by Celia Cherry





Birth – The Grandest Entrance of Them All

By Ruthie Snell

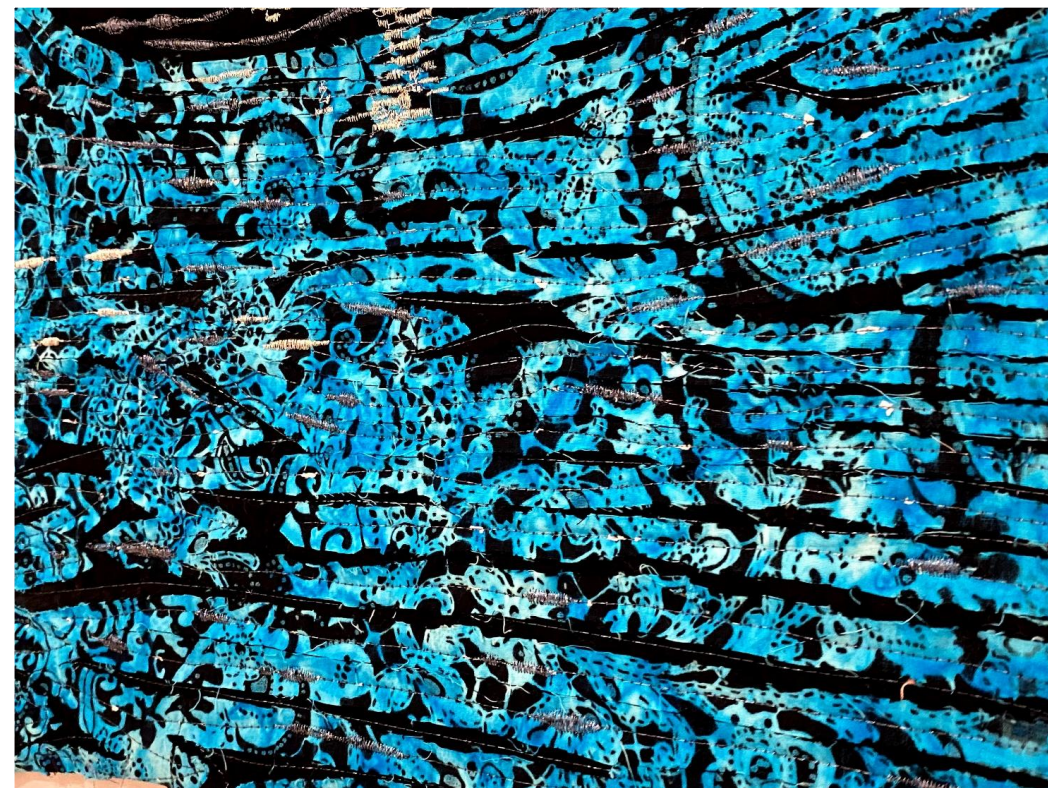
Origin of Design

My husband took an amazing picture of a mother swan

Artist Statement

I saw this chenille technique used on a flower quilt at a quilt show. I wanted to figure out how to do it and thought it would be great for water. The blue fabric reminded me of water.





Big Bang Theory

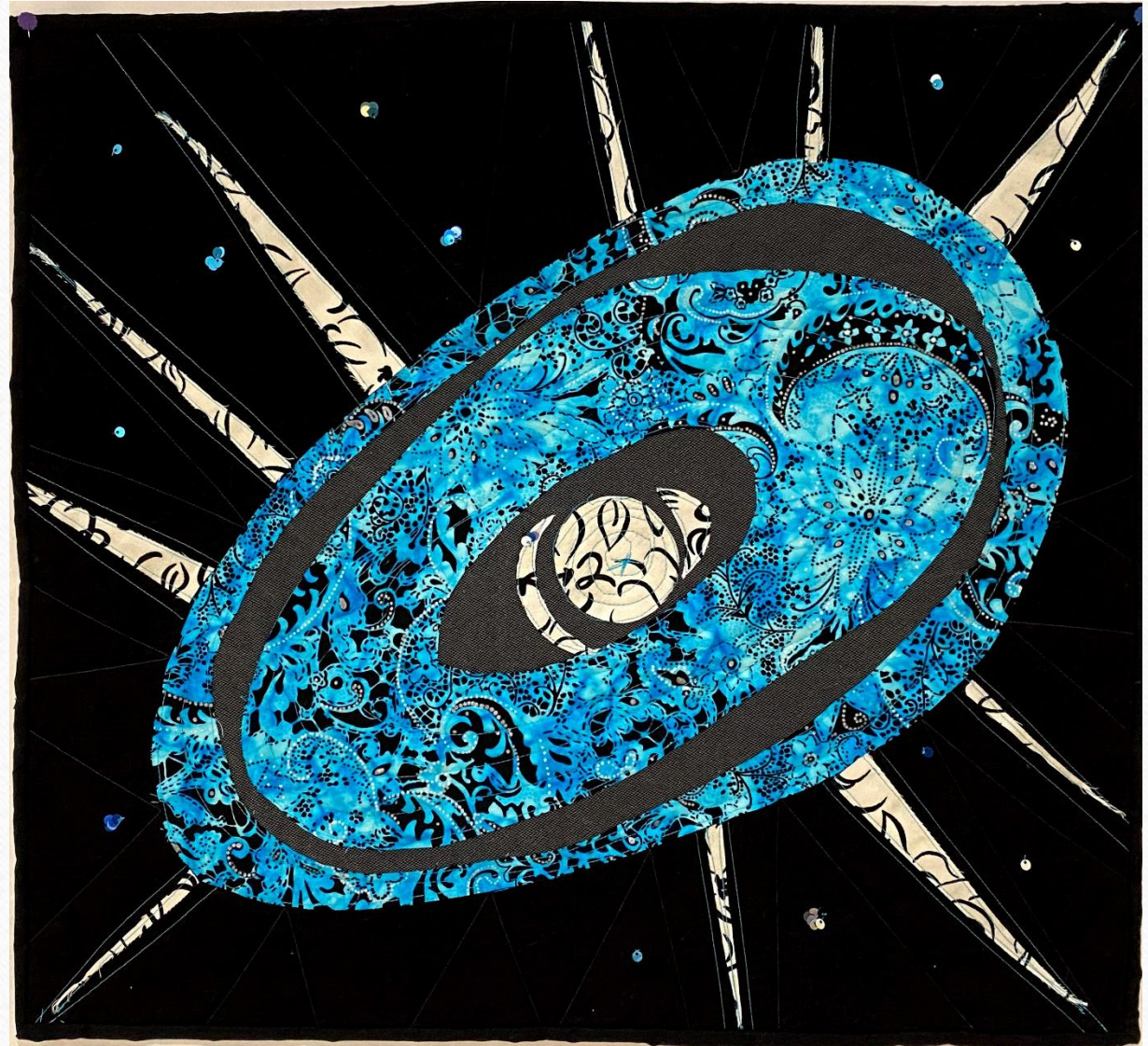
by Elizabeth Bouchier

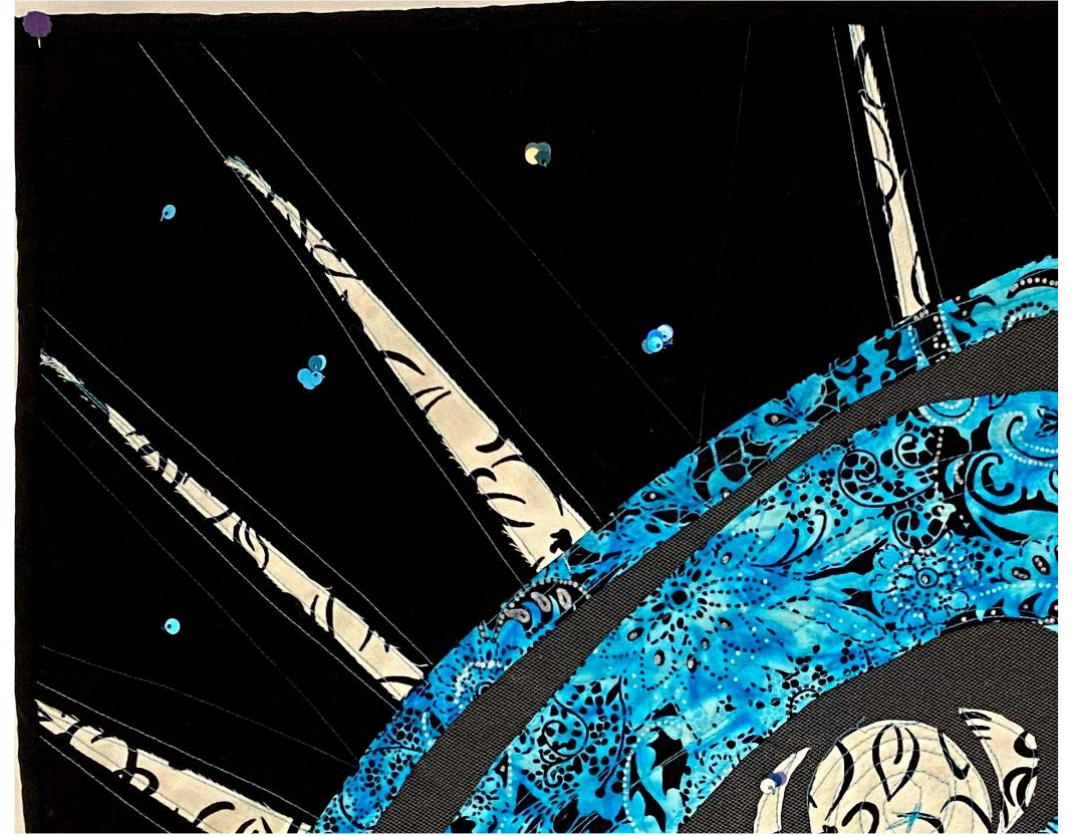
Origin of Design

My own design inspired by Star Wars (1977), Superstarfloraluk.com, and Bil Bryson's "A Short History Of Nearly Everything"

Artist Statement

When I looked at the fabric, the first thing I thought of was the scene in the 1977 film Star Wars, where the Millennium Falcon jumps to hyperspace – the streaks of whiteish-Blue light. That got me thinking about space and what may be the grandest entrance of all – the Big Bang and the birth of the universe!





Grand Entrance

By Lilian Budden

Origin of Design

Design drawn by Elizabeth Burden

Artist Statement

When I asked my grandchildren, James and Elizabeth, for ideas on the theme, "Grand Entrance", they suggested a circus tent. The elephant being a grand animal followed. It was hand appliqued and hand quilted by me, Lil Budden.





Numero 1, Avenue Montaigne by Tish Leupen

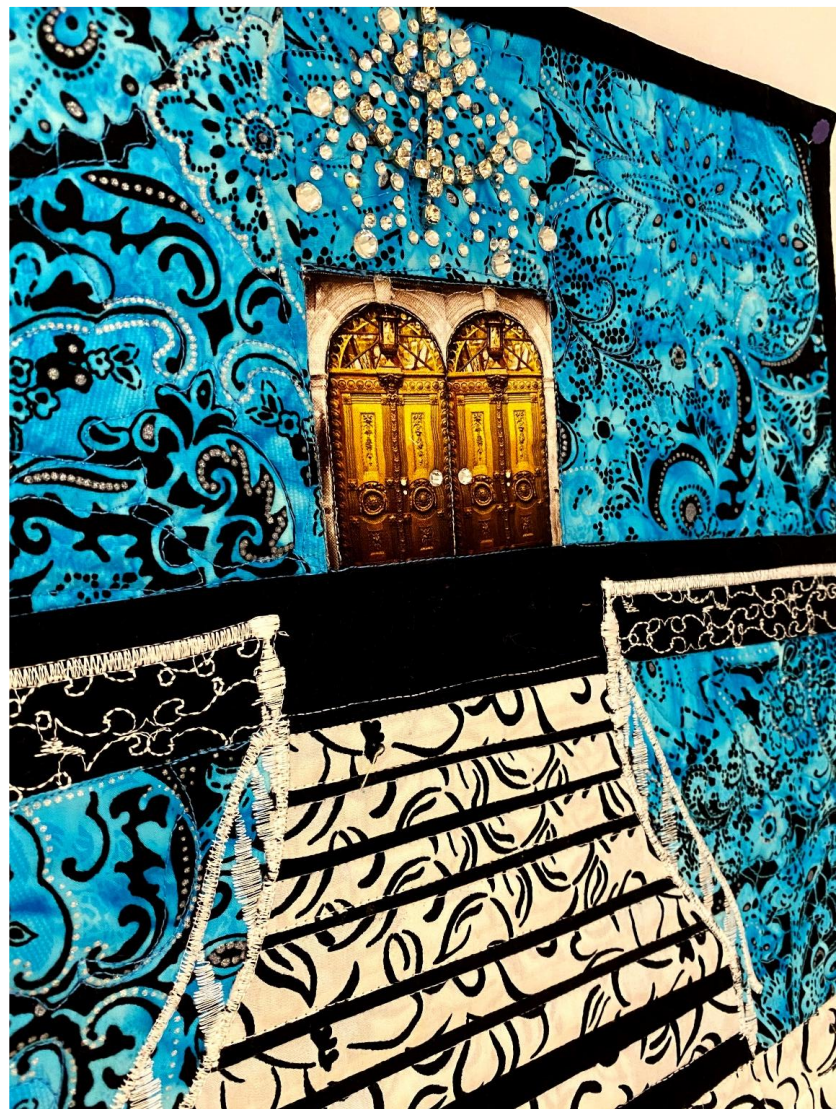
Origin of Design

I used photos of staircases to inspire me. I found fabric with doors that I used. Pieced, appliqued, machine embroidery, glue-on “jewels”

Artist Statement

I wanted to create a grand staircase leading up to ornate doors with a chandelier hanging above. The balcony railings are meant to look like ornate ironwork. This is not a real depiction, but I thought it needed a “grand” address.





Riding the Waves by Florence Sherbanowski

Origin of Design

Page in a colouring book

Artist Statement

The blue fabric suggested water in the ocean and I wanted to do a mermaid picture. I tried to use the black and white fabric and ended up with it in the tail with white covering it.





Grand Entrance

By Darlene Harvey

Origin of Design

Stairs and Girl in Dress on Stairs -
Google

Artist Statement

This is the first challenge for which I had an idea! The focus is the girl in the dress as she is coming down the stairs. I left part of the feet unattached to mimic them stepping from one stair to the next.





Grand Entrance at the Gala

by Jayne Terry

Origin of Design

Inspired by Karen Comb's pattern "Cascades" from Fons & Porter's Love of quilting Mar/Apr 2002

Artist Statement

I often return to Barbie as a jumping off point to kick start my creativity when it's lagging. She reminds me why I have crafting cloth. She has inspired me to create a water vision outfit for her. She loves the beauty and hand of Northcott cloth as much as I do. See turquoise water cascading down and around and over the rocks, leaving shimmering silver water droplets. By twisting and turning a diamond pattern appears. It goes down to a swirling, colourless white edge. But shooting up we see the bubbling foam rising with just a hint of (peach) colour to the sparkling, golden locks of the sun (her hair)





The WINNERS!!



3rd Place

Numero 1, Avenue
Montaigne
by Tish Leupen



2nd Place

Grand Entrance
by Lilian Budden



1st Place

Peacock Grand Entrance
by Patrick Chan